

# Appendix C

## **Tree Report**

## **C-1 Tree Report**



**CITY OF LOS ANGELES TREE REPORT  
550 SHATTO PLACE  
LOS ANGELES, CALIFORNIA 90020**

**SUBMITTED TO:**

**TF SHATTO, LP  
11400 WEST OLYMPIC BOULEVARD, SUITE 850  
LOS ANGELES, CALIFORNIA 90064**

**PREPARED BY:**

**CY CARLBERG  
ASCA REGISTERED CONSULTING ARBORIST #405  
ISA CERTIFIED ARBORIST #WE 0575A  
ISA QUALIFIED TREE RISK ASSESSOR  
CAUFC CERTIFIED URBAN FORESTER #013**

**Santa Monica Office**  
828 Fifth Street, Suite 3  
Santa Monica, California 90403  
Office: 310.451.4804

**Sierra Madre Office**  
80 West Sierra Madre Boulevard, #241  
Sierra Madre, California 91024  
Office: 626.428.5072



**MAY 14, 2018**

**[www.cycarlberg.com](http://www.cycarlberg.com)**

**550 SHATTO PLACE, LOS ANGELES, CALIFORNIA – CITY OF LOS ANGELES TREE REPORT**

**TABLE OF CONTENTS**

<b>COVER LETTER .....</b>	<b>1</b>
<b>TABLE 1 – TREE INVENTORY .....</b>	<b>2</b>
<b>EXHIBIT A – AERIAL IMAGE OF SUBJECT PROPERTY .....</b>	<b>4</b>
<b>EXHIBIT B – REDUCED COPY OF TREE LOCATION MAP .....</b>	<b>5</b>
<b>EXHIBIT C – TREE PHOTOGRAPHS .....</b>	<b>6</b>
<b>RESUME.....</b>	<b>12</b>





May 14, 2018

TF Shatto, LP  
11400 West Olympic Boulevard, Suite 850  
Los Angeles, California 90064  
c/o Ly Tang, Architect AIBC, [archi@lytang.com](mailto:archi@lytang.com)

**Re: Mixed-Use Development at 550 Shatto Place and 6th Street, Los Angeles, California 90020**

Dear TF Shatto,

This letter addresses our office's site visit of March 14, 2018 to the property located at 550 Shatto Place in Los Angeles, California. We were retained to visit the property and determine if any trees considered protected by the City of Los Angeles Tree Preservation Ordinance No. 177.044 or significant by the guidelines set forth by the City's Planning Department were present. The table on the following page sets forth the data for the twelve private property trees and eight City right-of-way trees; they were inventoried regardless of size. ***None of the private property species are considered protected by the ordinance.*** There are no trees on contiguous properties affected by proposed construction. The project site will have a new property line due to the City's Mobility Plan, and the rights-of-way palms along Shatto Place (ST1 – ST5) will eventually be considered part of private property and will likely be removed. The rights-of-way palms on 6<sup>th</sup> Street (ST6 – ST8) will be preserved and protected during the construction process. The City may request that a fence protect the tree's driplines<sup>1</sup> if equipment access is proposed adjacent to the palms on 6<sup>th</sup> Street.

Please feel welcome to contact me at our Santa Monica office if you have any immediate questions or concerns.

Respectfully submitted,

Cy Carlberg, Registered Consulting Arborist  
Principal, Carlberg Associates

*Santa Monica Office*  
[cy@cy Carlberg.com](mailto:cy@cy Carlberg.com)

**Santa Monica Office**  
828 Fifth Street, Suite 3  
Santa Monica, California 90403  
Office: 310.451.4804

**Sierra Madre Office**  
80 West Sierra Madre Boulevard, #241  
Sierra Madre, California 91024  
Office: 626.428.5072

[www.cy Carlberg.com](http://www.cy Carlberg.com)

---

<sup>1</sup> Dripline: The outermost edge of the tree's canopy. When depicted on a map or on the ground, the dripline will appear as an irregularly shaped outline that follows the contour of the furthest extension of the limbs and leaf canopy.

**TABLE 1 – INVENTORY OF TREES (PRIVATE PROPERTY AND RIGHTS-OF-WAY TREES)**

Tree #	Common Name	Botanical Name	Dbh(s)* at 4.5 feet (inches)	Height (feet)	Canopy Spread (feet)	Health Grade	Structure Grade	Protected Tree Y/N
1	tipu tree	<i>Tipuana tipu</i>	15, 17	35'	45'	B	B-	No
2	tipu tree	<i>Tipuana tipu</i>	17	35'	30'	B	B-	No
3	tipu tree	<i>Tipuana tipu</i>	17	35'	40'	B	B-	No
4	tipu tree	<i>Tipuana tipu</i>	18	35'	42'	B	B-	No
5	Hollywood juniper	<i>Juniperus chinensis</i> 'Torulosa'	4	15'	8'	B	B	No
6	Hollywood juniper	<i>Juniperus chinensis</i> 'Torulosa'	5	17'	8'	B	B	No
7	lemon-scented gum	<i>Corymbia citriodora</i>	2	15'	7'	A	A	No
8	crape myrtle	<i>Lagerstroemia indica</i>	3, 3, 3, 3.5, 3.5, 4	17'	18'	B	B	No
9	fern pine	<i>Afrocarpus falcatus</i>	2, 2.5, 3	18'	12'	B	B	No
10	umbrella tree	<i>Schefflera actinophylla</i>	6, 6, 6.5	20'	18'	B	B	No
11	Hong Kong orchid	<i>Bauhinia blakeana</i>	1, 3	13'	12'	B-	B	No
12	Hollywood juniper	<i>Juniperus chinensis</i> 'Torulosa'	4	15'	8'	B	B	No
<b>City of Los Angeles Right-of-Way Trees</b>								
ST1	queen palm	<i>Syagrus romanzoffiana</i>	30' BT**	36'	25'	A-	A-	Right-of-way on Shatto Pl.
ST2	queen palm	<i>Syagrus romanzoffiana</i>	30' BT	36'	25'	A	A-	Right-of-way on Shatto Pl.



<b>ST3</b>	queen palm	<i>Syagrus romanzoffiana</i>	33' BT	40'	25'	A	A-	Right-of-way on Shatto Pl.
<b>ST4</b>	queen palm	<i>Syagrus romanzoffiana</i>	33' BT	40'	25'	A	A-	Right-of-way on Shatto Pl.
<b>ST5</b>	queen palm	<i>Syagrus romanzoffiana</i>	10' BT	20'	15'	A	A	Right-of-way on Shatto Pl.
<b>ST6</b>	queen palm	<i>Syagrus romanzoffiana</i>	30' BT	36'	20'	A-	A-	Right-of-way on 6 <sup>th</sup> Street
<b>ST7</b>	queen palm	<i>Syagrus romanzoffiana</i>	30' BT	36'	20'	A	B-	Right-of-way on 6 <sup>th</sup> Street
<b>ST8</b>	queen palm	<i>Syagrus romanzoffiana</i>	35' BT	40'	20'	A	B	Right-of-way on 6 <sup>th</sup> Street

\* DBH – diameter at breast height. A forestry term describing a tree trunk's diameter measured at 4.5 feet above grade. Often used as a representation of tree size.

\*\* BT – brown trunk. Because palms do not generally increase in trunk size with age, they are measured by their 'brown trunk' height – the distance between grade and the newest emerging palm spear.



EXHIBIT A - AERIAL IMAGE OF SUBJECT PROPERTY



Aerial image of subject property  
550 Shatto Place, Los Angeles  
Image Source: Zimas





EXHIBIT B - REDUCED COPY OT TREE LOCATION MAP  
(Full-sized drawing to be part of the submittal)

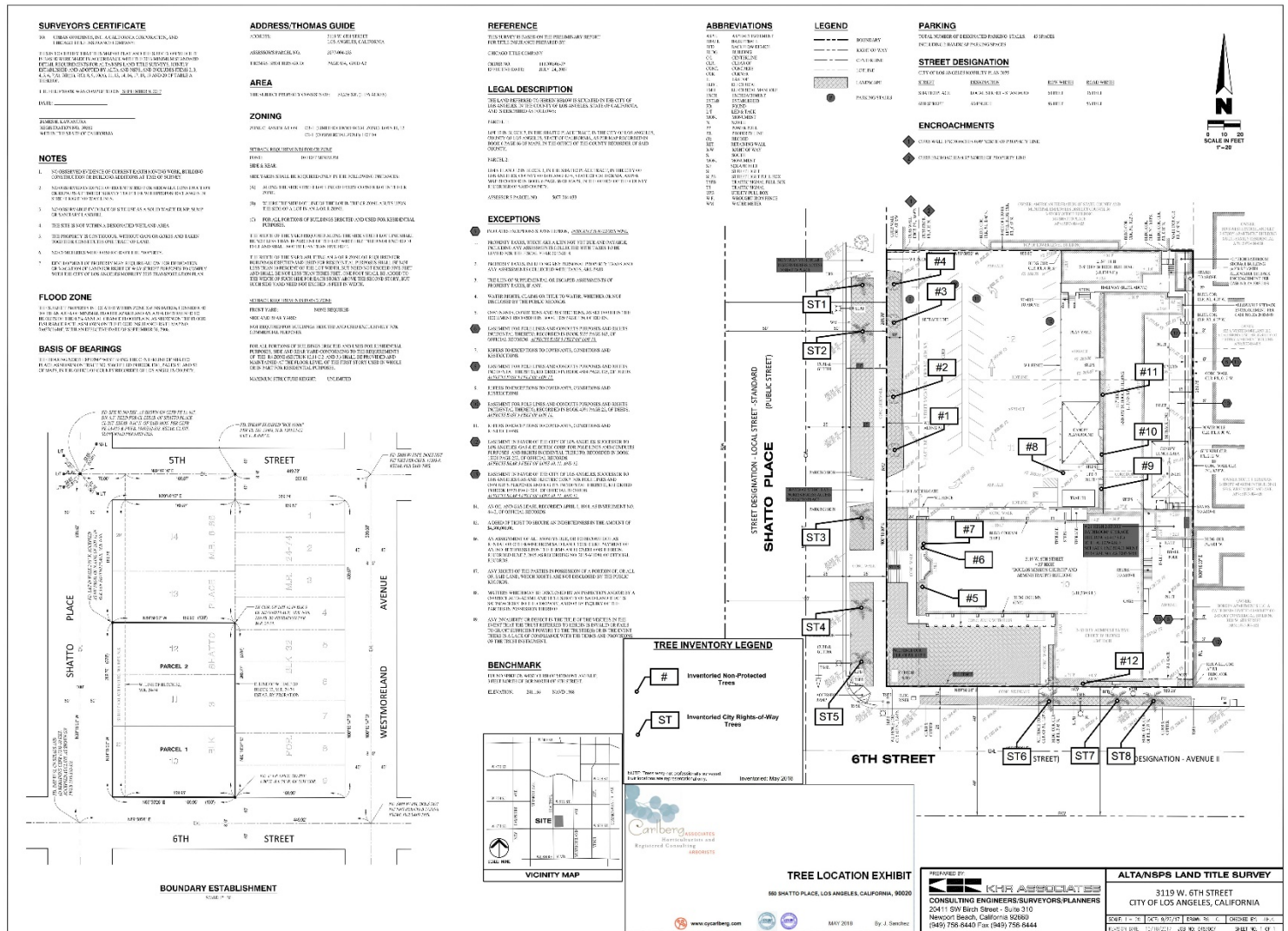




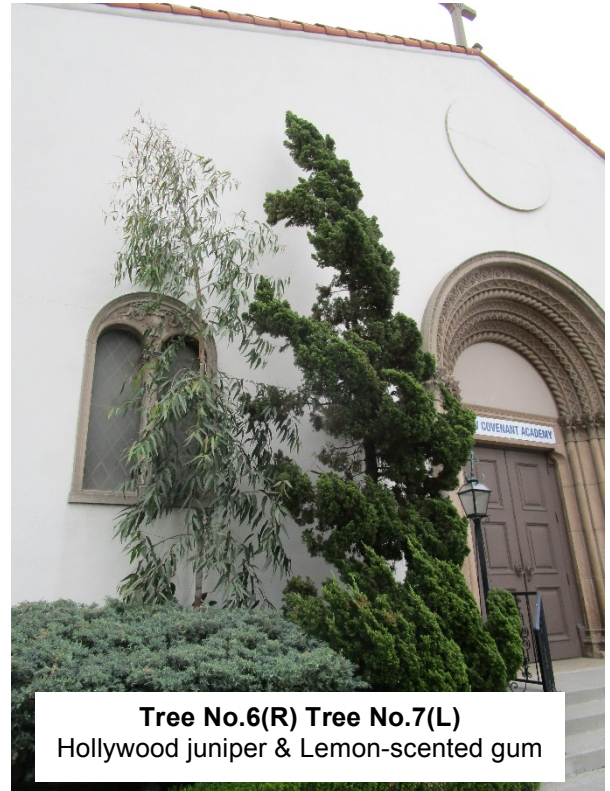
EXHIBIT C – CAPTIONED TREE PHOTOGRAPHS























**CY CARLBERG**

**CARLBERG ASSOCIATES**

2402 California Avenue, Santa Monica, California 90403  
(310) 453-TREE  
cy@cycarlberg.com

<u>Education</u>	B.S., Landscape Architecture, California State Polytechnic University, Pomona, 1985 Graduate, Arboricultural Consulting Academy, American Society of Consulting Arborists, Chicago, Illinois, February 2002 Graduate, Municipal Forestry Institute, Lied, Nebraska, 2012
<u>Experience</u>	Consulting Arborist, Carlberg Associates, 1998-present Manager of Grounds Services, California Institute of Technology, Pasadena, 1992-1998 Director of Grounds, Scripps College, Claremont, 1988-1992
<u>Certificates</u>	Certified Arborist (#WE-0575A), International Society of Arboriculture, 1990 Registered Consulting Arborist (#405), American Society of Consulting Arborists, 2002 Certified Urban Forester (#013), California Urban Forests Council, 2004 Certified Tree Risk Assessor (#1028), International Society of Arboriculture, 2011

**AREAS OF EXPERTISE**

Ms. Carlberg is experienced in the following areas of tree management and preservation:

- Tree health and risk assessment
- Master Planning
- Tree inventories and reports to satisfy jurisdictional requirements
- Expert Testimony
- Post-fire assessment, valuation, and mitigation for trees and native plant communities
- Value assessments for native and non-native trees
- Pest and disease identification
- Guidelines for oak preservation
- Selection of appropriate tree species
- Planting, pruning, and maintenance specifications
- Tree and landscape resource mapping – GPS, GIS, and AutoCAD
- Planning Commission, City Council, and community meetings representation

**PREVIOUS CONSULTING EXPERIENCE**

Ms. Carlberg has overseen residential and commercial construction projects to prevent damage to protected and specimen trees. She has thirty-five years of experience in arboriculture and horticulture and has performed tree health evaluation, value and risk assessment, and expert testimony for private clients, government agencies, cities, school districts, and colleges. Representative clients include:

The Huntington Library and Botanical Gardens	The City of Claremont
The Los Angeles Zoo and Botanical Gardens	The City of Beverly Hills
The Rose Bowl and Brookside Golf Course, Pasadena	The City of Pasadena
Walt Disney Concert Hall and Gardens	The City of Los Angeles
The Art Center College of Design, Pasadena	The City of Santa Monica
Pepperdine University	Santa Monica/Malibu Unified School District
Loyola Marymount University	San Diego Gas & Electric
The Claremont Colleges (Pomona, Scripps, CMC, Harvey Mudd,	Los Angeles Department of Water and Power
Claremont Graduate University, Pitzer, Claremont University Center)	Rancho Santa Ana Botanic Garden, Claremont
Quinn, Emanuel, Urquhart and Sullivan (attorneys at law)	Latham & Watkins, LLP (attorneys at law)

**AFFILIATIONS**

Ms. Carlberg serves with the following national, state, and community professional organizations:

- California Urban Forests Council, Board Member, 1995-2006
- Street Tree Seminar, Past President, 2000-present
- American Society of Consulting Arborists Academy, Faculty Member, 2003-2005, 2014
- American Society of Consulting Arborists, Board of Directors, 2013-Present
- Member, Los Angeles Oak Woodland Habitat Conservation Strategic Alliance, 2010-present

